

## *Pattern Design Guides by Don McCunn*

### Tunic Sleeve Variations



Bias Cut Blouse for Women or Shirt for Men with a Two-Piece Shirt Collar



Pull Over Tunic with Standing Collar



Tunic Robe with Shawl Collar

These instructions show how to create variations of Tunic Sleeve from the basic fitted sloper. The instructions have been prepared for Don McCunn's online class "How to Make an Upper Torso (aka Bodice) Sloper."

(rev: 2/20/2009)

Copyright © 2009 by Donald H. McCunn

- You may copy this Pattern Design Guide for your own individual use.
- You may not distribute or sell copies of the instructions to others including friends, club members, students, or clients.
- You may sell garments made using these instructions without any restrictions.

Design Enterprises of San Francisco  
 1007 Castro Street, San Francisco, CA 94114  
 (415) 282-8813 || Website: [Patternmaking-Classes.com](http://Patternmaking-Classes.com)  
 Yahoo Groups: <http://groups.yahoo.com/group/How-to-Make-Sewing-Patterns>  
<http://groups.yahoo.com/group/Patternmaking-Classes>

# Tunic Sleeve Variations

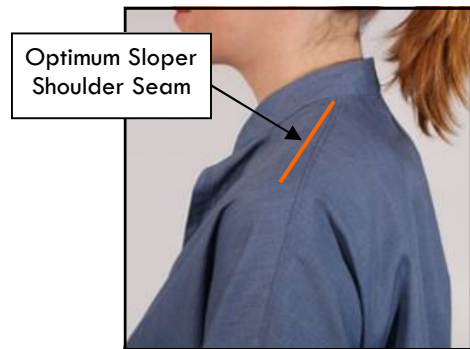
by Don McCunn

## Contents

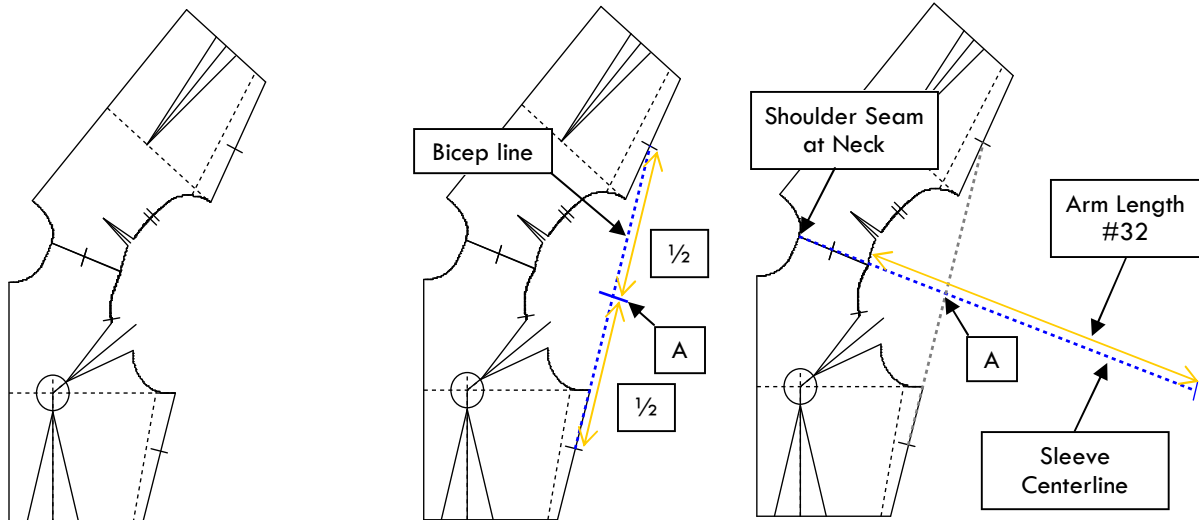
Introduction .....	2
Bias Cut Blouse or Shirt .....	5
Pull Over Tunic .....	6
Sewing Sequence for Bias and Pull Over ....	7
Robe with a Shawl Collar .....	8

To create Tunic Sleeves, first create a Tunic Sloper. For a Tunic Sloper the slope of the front shoulder seam must be the same as the slope of the back shoulder seam. Also the width of the front pattern along the underarm seam must be the same length as the back. This means that some “cheating” to the fitted Sloper pattern may need to be made to make the patterns match.

In the photo to the left, the red line indicates how the shoulder seam from a fitted Sloper has been “compromised” to create the Tunic Sloper.



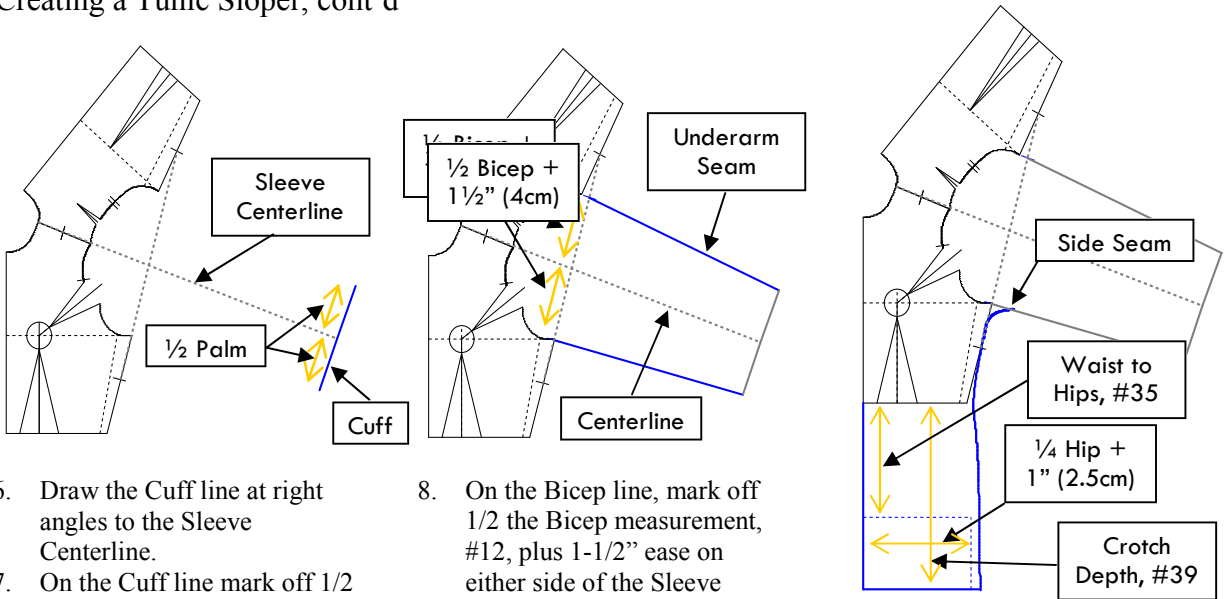
## Creating a Tunic Sloper



1. Place the back pattern so the back shoulder seam touches the shoulder seam of the front pattern.
2. Draw a line from the back side seam sewing notch to the front side seam sewing notch. this is the Bicep line.
3. Divide the Bicep line in half and make a mark, Mark “A.”
4. Draw a line from the shoulder seam at the neck through Mark A. This is the Sleeve Centerline.
5. Mark off the Arm Length, #32, to establish the cuff location.

## Tunic Sleeve Variations, cont'd

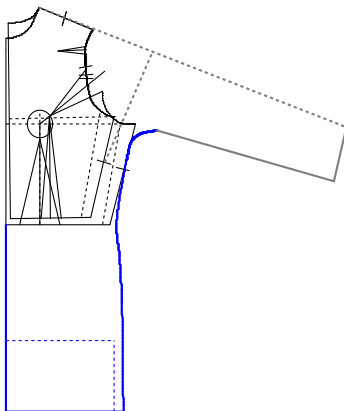
### Creating a Tunic Sloper, cont'd



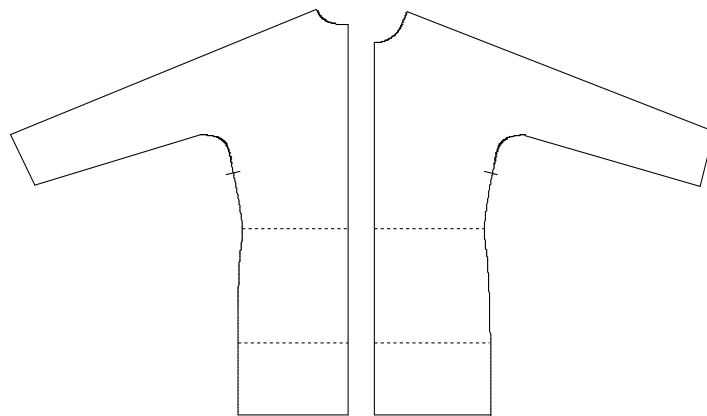
6. Draw the Cuff line at right angles to the Sleeve Centerline.
7. On the Cuff line mark off 1/2 the Palm measurement, #14, on either side of the Outside line of the sleeve.

8. On the Bicep line, mark off 1/2 the Bicep measurement, #12, plus 1-1/2" ease on either side of the Sleeve Centerline.
9. Draw in the Underarm Seams.
10. The Tunic pattern can now be extended down to include the lower torso. If you have a Lower Torso (Skirt) Sloper, use this as your guide.

11. Extend the Center Front down by the Crotch Depth length #39 and draw in the Hem line.
12. Measure down the Waist to Hip measurements, #35 and draw in the Hip line.
13. Mark off 1/4 the Hip #15 plus 1" (2.5cm) ease.
14. Draw in the Side Seam.



15. Fold the pattern along the Sleeve Centerline and trace the Side Seam, and Hem lines onto the back pattern.
16. Extend the Center Back line to the hem.
17. If desired, adjust the Side seams in and out to change the ease around the bust/chest area.

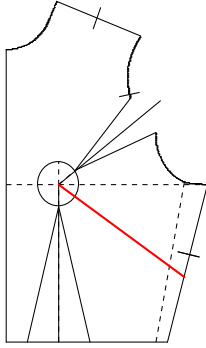


You may want to create a second version of the Tunic Sloper that separates the front and back patterns.

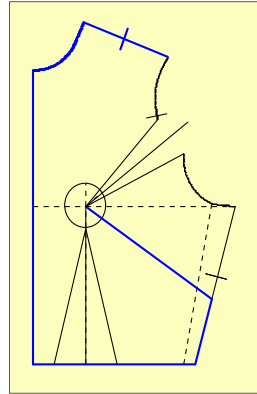
## Tunic Sleeve Variations, cont'd

### Adding a Dart

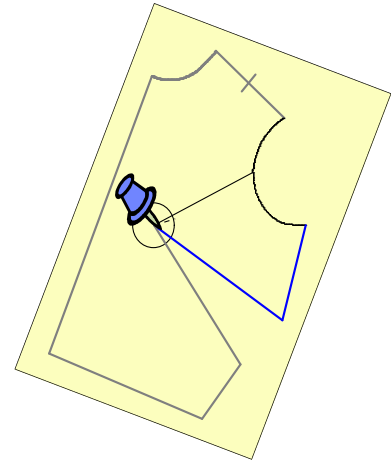
Use the following steps to create a variation of the Tunic Sloper that includes an Above the Bust Dart shape in the side seam.



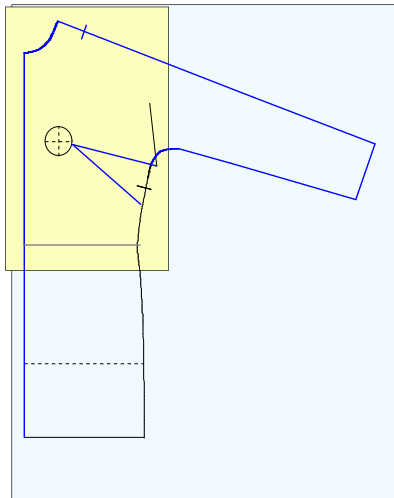
1. On a copy of the Bodice Sloper, draw a new dart line to the Side Seam, the red line. In this example, the new dart line is approximately half way down the side seam.



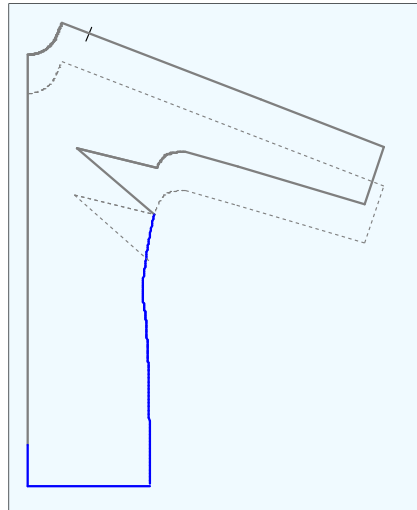
2. Place a new sheet of pattern paper over the Sloper.
3. Trace around the pattern from the Shoulder Seam to the new Dart line, the blue lines.



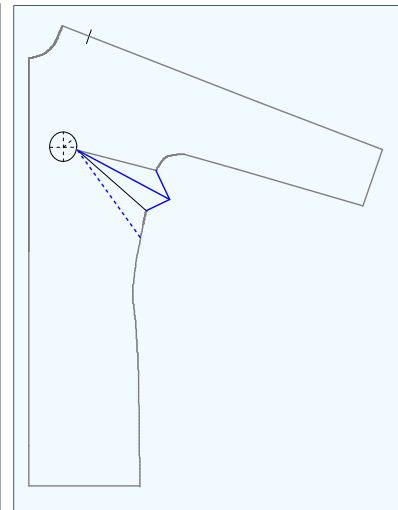
4. Pivot out the Above the Bust Dart in the armscye.
5. Trace the new dart line and the Side Seam up to the Armscye.



6. Lay the new dart on top of a copy of the Tunic Sloper. Align the Center Front, Neck, and Shoulder seams of both patterns.
7. Place a large sheet of new pattern paper on top of combined patterns.
8. Trace around the Tunic Sloper to include the Center Front, Neck, Sleeve, and the new dart.



9. Remove the smaller Sloper pattern with the new dart.
10. Slide the pattern up by the width of the dart.
11. From the bottom of the new dart trace the side seam of the Tunic Sloper and the hem.
12. Extend the Center Front down to the hem.
13. Remove the original Tunic Sloper.



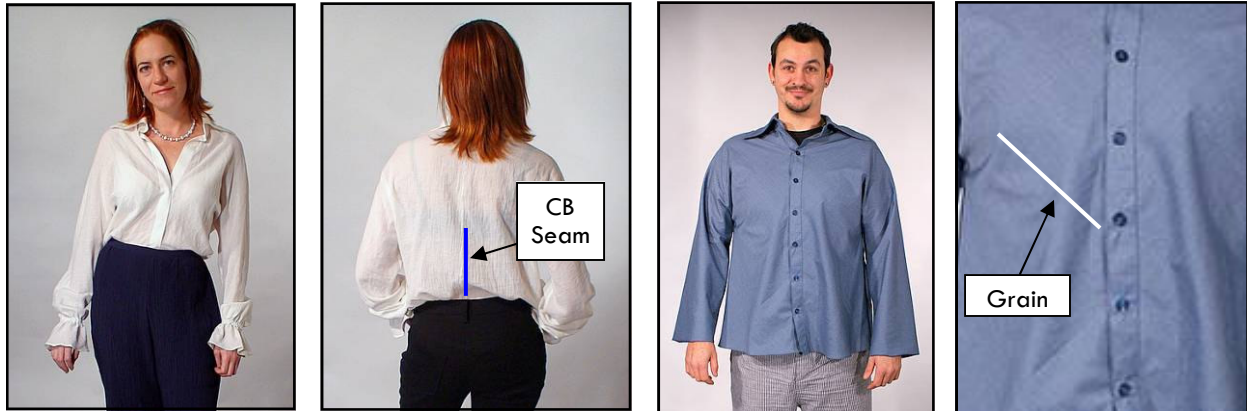
14. Draw in a Dart Center line.
15. Measure down the Side Seam 1/2 the dart width and draw in the position of the dart centerline when it is folded, the dotted line.
16. Mark the length of the folded dart center line on the center line of the dart and draw in the point of the dart.

## Bias Cut Blouse or Shirt

The Bias Cut Blouse/Shirt uses the Tunic Sloper with the front and back patterns combined along the Sleeve Centerline. For 44" width fabric the Center Back must be a seam line. As the fabric passes over the shoulder seam, the front of the garment automatically becomes cut on the bias.

For these two examples I was looking for a variety of sewing techniques. I used snaps instead of buttons for the woman's blouse. And a free hanging sleeve for the man's shirt. Cody, the model sewed his own rolled hem for the bottom of the sleeves, his first rolled hem, see the video.

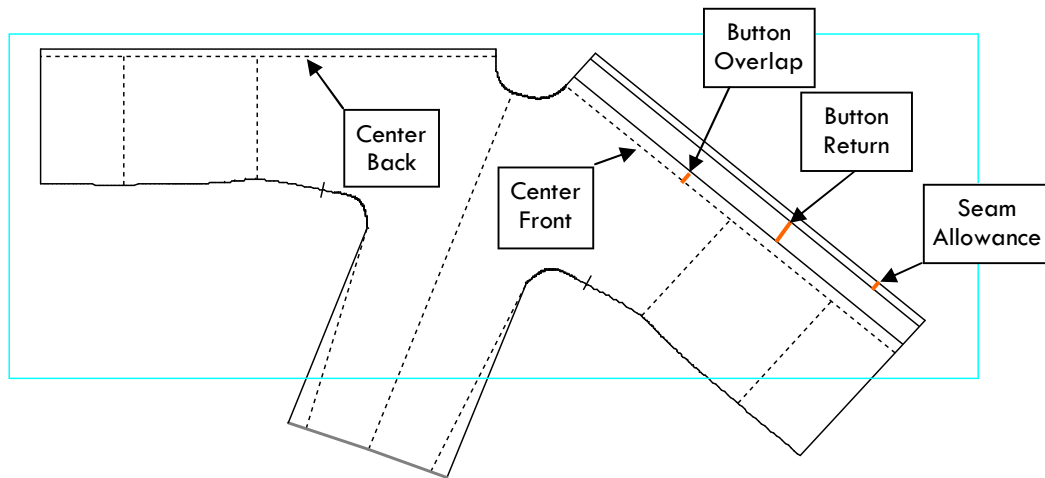
Both shirt collars use the pattern described on page 139 if my book.



Woman's Blouse with Center Front Snap Closure and Sleeve Gathered at Wrist

Man's Shirt with Center Front Button Closure and Free Hanging Sleeve

### Pattern for the Bias Cut Blouse/Shirt



On the pattern layout above, the light blue lines indicate 44" fabric folded double to illustrate how this pattern can not be cut on the fold.

1. To the combined Tunic Sloper add 1/2" (12mm) seam allowance to the Center Back seam.
2. Change the Cuff to the same width as the bicep.
3. Add a 5/8" (15mm) button overlap to Center Front. then a 1-1/4" (30mm) return and a 1/2" (12mm) seam allowance..
4. Add 1/2" (12mm) seam allowances to the neck, hem, side seam, and cuff.

## Pull Over Tunic

The Pull Over Tunic indicates some interesting feature of an easy to sew garment. This garment requires no closure device such as buttons and button holes. The pattern does need to be adjusted for two additional measurements.

1. How wide does the garment need to be made to pull over the body.
2. How much room does the neck opening need, to pull over the head.

To make this garment super easy to sew, the Center Front is cut as a seam and the Center Back is cut on the fold. To achieve this out of 44" wide fabric, a seam needs to be added to add length to create a long sleeve garment. To illustrate this fact, I left the outside of the sleeve opened in a slit from the elbow to the cuff.

The standing collar is a slight challenge, see page 133 to 136 for the pattern.

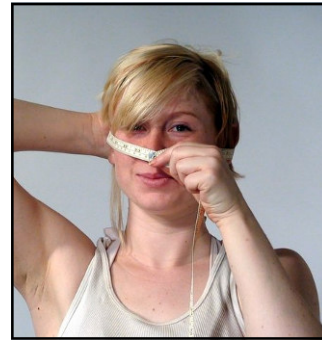


### The Pull Over Measurements



The circumference of this garment needs to be wide enough so that it can be pulled over the head.

Pull Over Circumference: \_\_\_\_\_

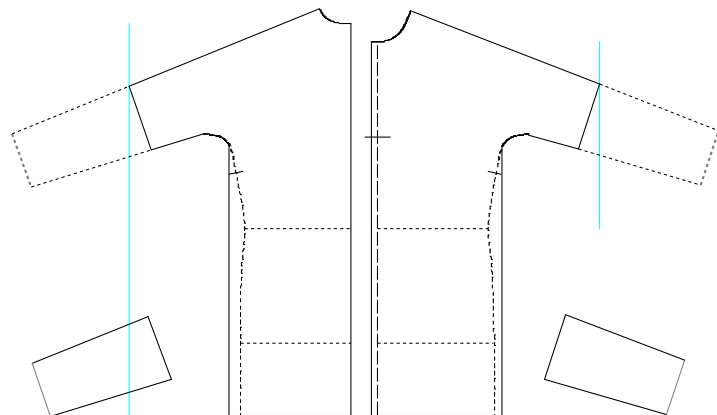


The neck opening needs to be wide enough so that the garment can be pulled over the head.

Neck Opening Circumference: \_\_\_\_\_

### Pull Over Tunic Pattern

1. Determine where the sleeve extension seam needs to be located based on fabric that is 22" wide when folded, the blue line.
2. Change the side seam as necessary for the Pull Over Circumference.
3. Use the Neck Opening Circumference to determine how far Center Front must be left open.
4. Add 1/2" (12mm) seam allowances to all seams including Center Front but not Center Back.



For this example the two sleeve extensions are cut as separate front and back pieces that will be joined with an underarm seam. If you don't do that the seams will come out with strange angles that can be difficult to sew.



---

## Sewing Sequences

---

### Sewing Sequence for Bias Cut Blouse/Shirt

The Button Overlap may either be on the outside or inside of the garment. This is a design choice.

1. Cut the pattern from the fashion fabric.
2. Pin the two pieces together at center back, right sides together, then sew.
3. Pin the underarm and side seams, right sides together, then sew.
4. Fuse interlining to both button returns to stabilize the button overlap.
5. Turn the button overlap seam allowance and press.
6. Turn the button overlap. Top stitch along both sides of the button overlap.
7. Roll the hem and top stitch in place.
8. Roll the cuff and top stitch in place.
9. Fuse interlining to the collar pieces.
10. Sew around the outside edges of the outer collar, then trim and turn.
11. Top stitch around outer edges of the outer collar.
12. Turn under the seam allowance of the inside of the standing portion of the collar that will join the collar to the body of the garment.
13. Pin the standing portion of the collar to the outer collar.
14. Sew the standing portion of the collar to the outer collar, then turn.
15. Sew the collar to the body of the garment, right sides together.
16. Turn the seam allowance into the collar then top stitch the collar to the body of the garment.

If you are gathering the sleeve for a ruffle, follow the steps below.

1. Sew a length of twill tape to the inside of the sleeve 3" up from the cuff. Sew the twill tape along the two outside edges leaving the twill tape open at the underarm seam.
2. Thread 1/4" elastic inside the twill tape casing.
3. Adjust the elastic for a comfortable fit, then sew.

---

### Sewing Sequence for the Pull Over Tunic

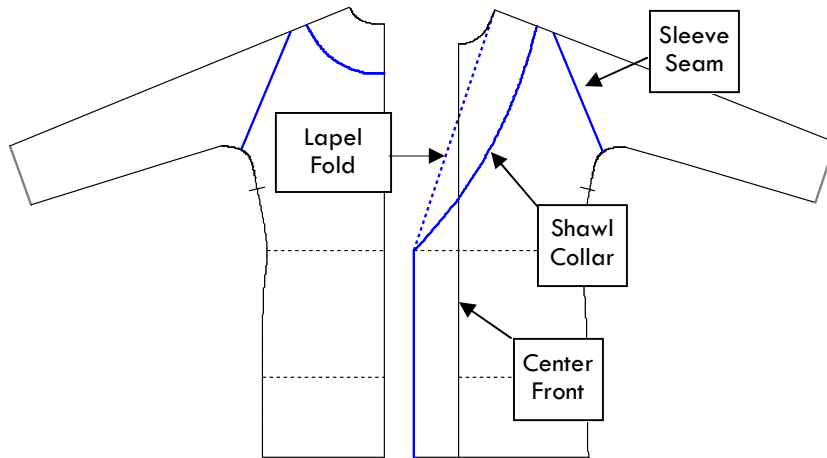
1. Cut the pattern from the fashion fabric.
2. Pin the center front, right sides together, then sew from the sewing notch to the hem.
3. Roll the center seam allowance at the neck opening then top stitch in place.
4. Pin the underarm and side seams, right sides together, then sew.
5. Pin the underarm seam of the sleeve extensions, right sides together, then sew.
6. Pin the underarm extensions to the body of the garment, right sides together then sew.
7. Roll the hem and top stitch in place.
8. Roll the cuff and top stitch in place.
9. Fuse interlining to the collar pieces.
10. Turn under the seam allowance of the inside of the standing collar that will join the collar to the body of the garment.
11. Sew around the outside edges of the standing collar, then turn.
12. Sew the collar to the body of the garment, right sides together.
13. Turn the seam allowance into the collar then top stitch the collar to the body of the garment.

## Robe with a Shawl Collar

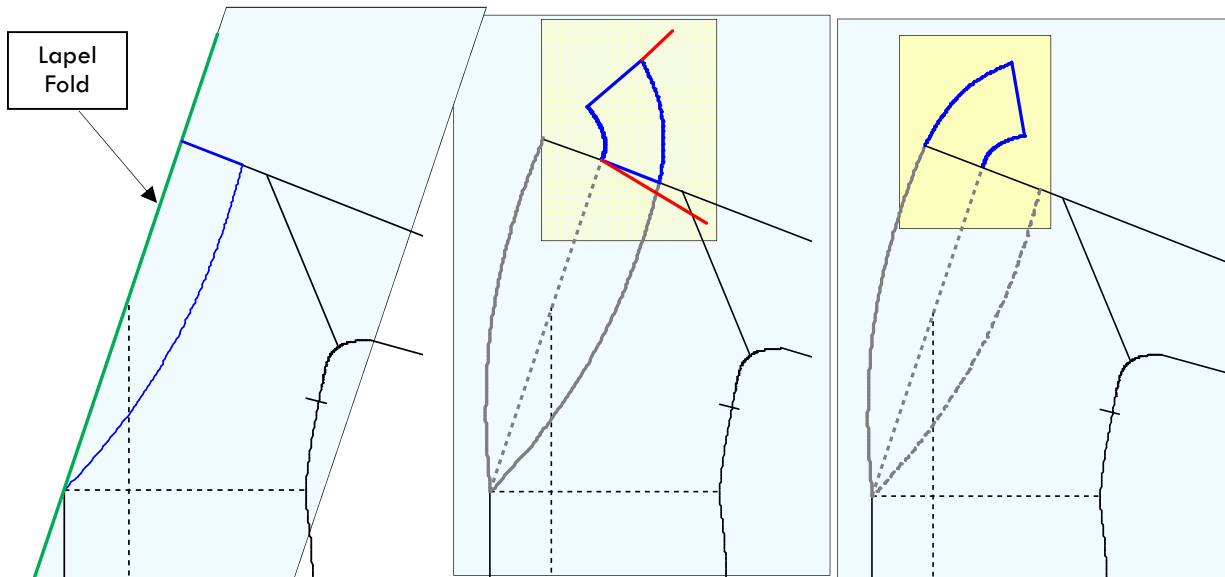
This robe with a Shawl collar is another easy to sew project. The trickiest part is sewing the back of the Shawl to the neckline. It uses the tunic sleeve but adds a seam that separates the sleeve from the body of the garment to create the appearance of a set-in sleeve. The front of the Tunic Sloper is extended out 3" (8cm) at Center Front for the wrap around.

I used a rayon satin with a rolled hem. The Shawl collar is actually the "wrong side" of the satin. It has a different texture and hence gives a subtle difference to the appearance.

The pattern below shows the design lines for this garment.



### Creating the Pattern

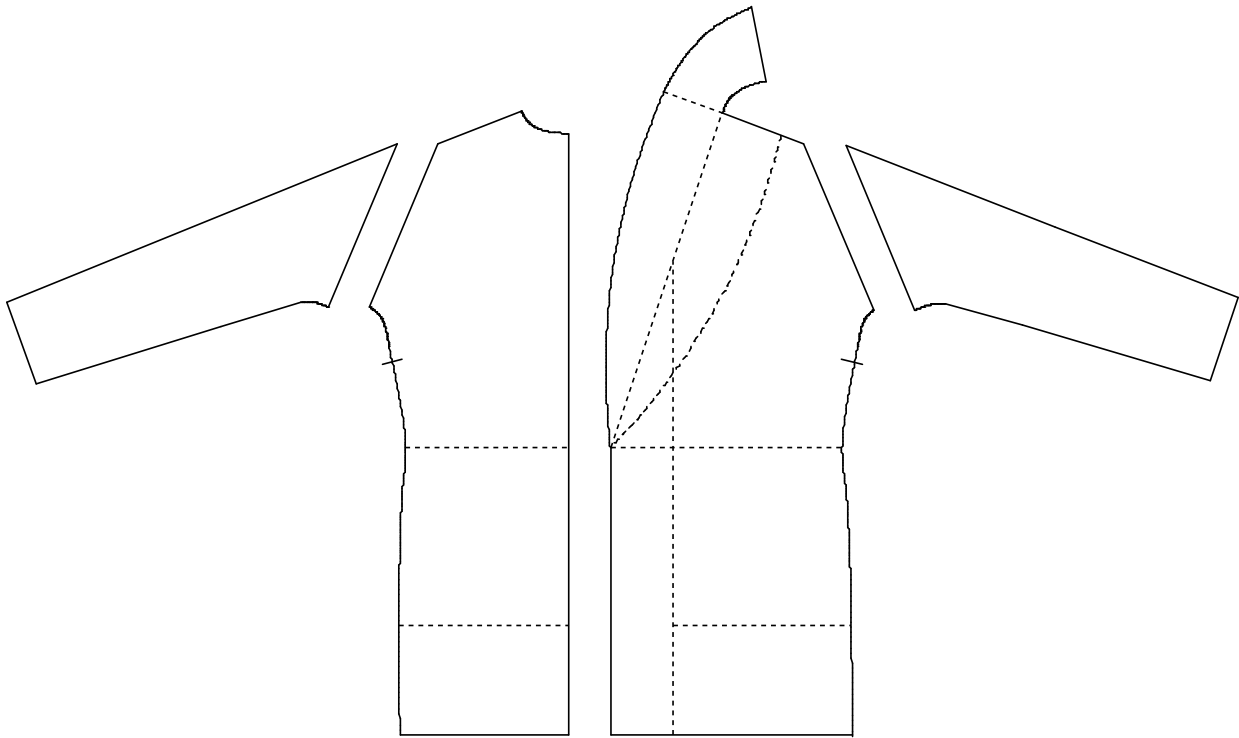


1. Place a clean sheet of pattern paper on top of the Tunic design.
2. Fold the pattern paper along the lapel fold.
3. Trace the shape of the Shawl lapel.
4. Open up the new pattern paper.
5. Place the back pattern under the front matching the Shoulder Seams, then pivot slightly as shown by the red line.
6. On a small sheet of paper trace the back of the Shawl collar.
7. Flip the small paper with the back collar and align it under the Shawl lapel as shown by the blue lines above.
8. Trace the back collar shape onto the front pattern.



## Robe with a Shawl Collar, cont'd

---



---

### Sewing the Robe with a Shawl Collar

1. Add 1/2" (12mm) seam allowances to all pattern pieces.
2. Cut the pattern from the fashion fabric.
3. Pin the sleeves to the body of the garment, right sides together, then sew.
4. Stay stitch around the corner where the back of the Shawl collar meets the shoulder seam, then clip into the corner.
5. Pin the shoulder seams, right sides together, then sew.
6. Pin the center back seam of the Shawl collar, wrong sides together, then sew.
7. Pin the neck of the back of the Shawl collar to the back neck line, right sides together, then sew. (This is the tricky seam to sew but both are on the bias so it can be done.)
8. Pin the underarm and side seams, right sides together, then sew.
9. Roll the hem and neckline and top stitch in place. I rolled this hem so the good side of the fabric became the edge of the Shawl lapel and collar.
10. Roll the cuff and top stitch in place.